









**XTRATA LION PHASE 2- Mill Building, Furnace Building (more than 6000 tonne structural steel, below right) and warehouse building, South Africa (2011-2012)**

Work undertaken

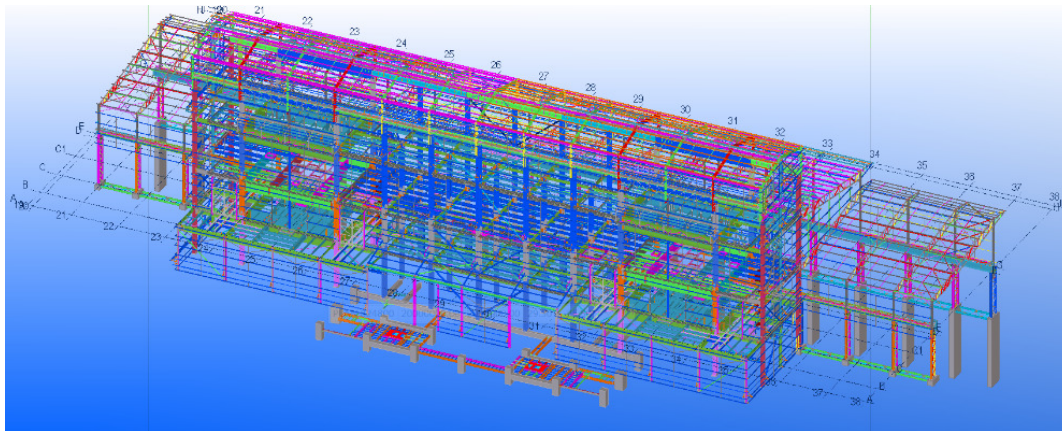
-  Set up TS models
-  Check the clashes between the pipes, ducts, equipments and structural members
-  Assist engineers by providing information needed for engineering
-  Detail modelling for connections
-  Produce shop drawings
-  Provide material list
-  Provided installation drawings
-  Coordinate between engineering and fabricator



Mill building



Mill building (part)



Mill building-model